

## The Rotary Club of Kettering launches **MEMORY CAFÉ**

**The number of people with dementia in the UK  
is forecast to increase to over 1 million by 2025.**

Dementia affects around 820,000 people in the UK with 25 million of the population having a close friend or family member with dementia. These figures are set to double within a generation, increasing the number of husbands, wives and children struggling to cope in isolation.

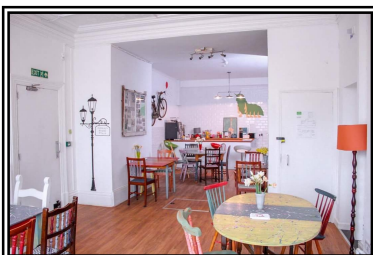
Memory Cafés are places where people with dementia, and their carers, can enjoy regular social and supportive get-togethers. They are informal drop in centres where carers can meet and talk to others with similar problems.

In Kettering, the café run by the Alzheimer's Society recently closed when Local Government funding was stopped. But now, **The Rotary Club of Kettering** has agreed to set up and sponsor a new **MEMORY CAFÉ** in Kettering. Funding is provided solely from money raised locally by **The Rotary Club of Kettering**.



Rotary club members Yvonne Robinson and Dennis Bowden have been working tirelessly to organise the new café and report that they have been lucky to enlist the help of volunteers with experience in the mental health sector. Having these experienced people with the relevant skills will help ensure the café's success. In addition, they have been grateful for advice given by The Alzheimer's Society.

The Café is to be located in the Keystone Centre, 97 Rockingham Road, Kettering and will begin with a 2 hour session from 2pm to 4pm on the second Thursday of each month, starting on 8th February 2018.



The aim of the Kettering Rotary **MEMORY CAFÉ** is to provide support and advice both for carers and dementia sufferers themselves.